

Q10	BR-30	THIS PLAY WAS REPORTED TO HAVE BEEN FOUND IN A BOX IN THE BACK OF A BUS STOP ACROSS THE STREET FROM THE BUS STOP ROAD.
-----	-------	---

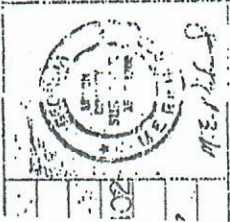
ROAD	DISTANCE	BEARING	ROAD	DISTANCE	
1	3.00	N 45° 00' E	1	3.00	N 45° 00' E
2	1.00	N 30° 00' E	2	1.00	N 30° 00' E
3	2.00	N 15° 00' E	3	2.00	N 15° 00' E
4	1.50	N 00° 00' E	4	1.50	N 00° 00' E
5	2.50	N 15° 00' E	5	2.50	N 15° 00' E
6	1.00	N 30° 00' E	6	1.00	N 30° 00' E
7	3.00	N 45° 00' E	7	3.00	N 45° 00' E
8	1.50	N 60° 00' E	8	1.50	N 60° 00' E
9	2.00	N 75° 00' E	9	2.00	N 75° 00' E
10	1.00	N 90° 00' E	10	1.00	N 90° 00' E
11	2.50	N 75° 00' E	11	2.50	N 75° 00' E
12	1.50	N 60° 00' E	12	1.50	N 60° 00' E
13	3.00	N 45° 00' E	13	3.00	N 45° 00' E
14	1.00	N 30° 00' E	14	1.00	N 30° 00' E
15	2.00	N 15° 00' E	15	2.00	N 15° 00' E
16	1.50	N 00° 00' E	16	1.50	N 00° 00' E
17	2.50	N 15° 00' E	17	2.50	N 15° 00' E
18	1.00	N 30° 00' E	18	1.00	N 30° 00' E
19	3.00	N 45° 00' E	19	3.00	N 45° 00' E
20	1.50	N 60° 00' E	20	1.50	N 60° 00' E
21	2.00	N 75° 00' E	21	2.00	N 75° 00' E
22	1.00	N 90° 00' E	22	1.00	N 90° 00' E
23	2.50	N 75° 00' E	23	2.50	N 75° 00' E
24	1.50	N 60° 00' E	24	1.50	N 60° 00' E
25	3.00	N 45° 00' E	25	3.00	N 45° 00' E
26	1.00	N 30° 00' E	26	1.00	N 30° 00' E
27	2.00	N 15° 00' E	27	2.00	N 15° 00' E
28	1.50	N 00° 00' E	28	1.50	N 00° 00' E
29	2.50	N 15° 00' E	29	2.50	N 15° 00' E
30	1.00	N 30° 00' E	30	1.00	N 30° 00' E
31	3.00	N 45° 00' E	31	3.00	N 45° 00' E
32	1.50	N 60° 00' E	32	1.50	N 60° 00' E
33	2.00	N 75° 00' E	33	2.00	N 75° 00' E
34	1.00	N 90° 00' E	34	1.00	N 90° 00' E
35	2.50	N 75° 00' E	35	2.50	N 75° 00' E
36	1.50	N 60° 00' E	36	1.50	N 60° 00' E
37	3.00	N 45° 00' E	37	3.00	N 45° 00' E
38	1.00	N 30° 00' E	38	1.00	N 30° 00' E
39	2.00	N 15° 00' E	39	2.00	N 15° 00' E
40	1.50	N 00° 00' E	40	1.50	N 00° 00' E
41	2.50	N 15° 00' E	41	2.50	N 15° 00' E
42	1.00	N 30° 00' E	42	1.00	N 30° 00' E
43	3.00	N 45° 00' E	43	3.00	N 45° 00' E
44	1.50	N 60° 00' E	44	1.50	N 60° 00' E
45	2.00	N 75° 00' E	45	2.00	N 75° 00' E
46	1.00	N 90° 00' E	46	1.00	N 90° 00' E
47	2.50	N 75° 00' E	47	2.50	N 75° 00' E
48	1.50	N 60° 00' E	48	1.50	N 60° 00' E
49	3.00	N 45° 00' E	49	3.00	N 45° 00' E
50	1.00	N 30° 00' E	50	1.00	N 30° 00' E

ROAD	DISTANCE
15.38	39.48
23.56	124.50
50.70	44.28
30.19	42.07
28.24	56.32
4.71	46.27
63.27	40.83
	147.33

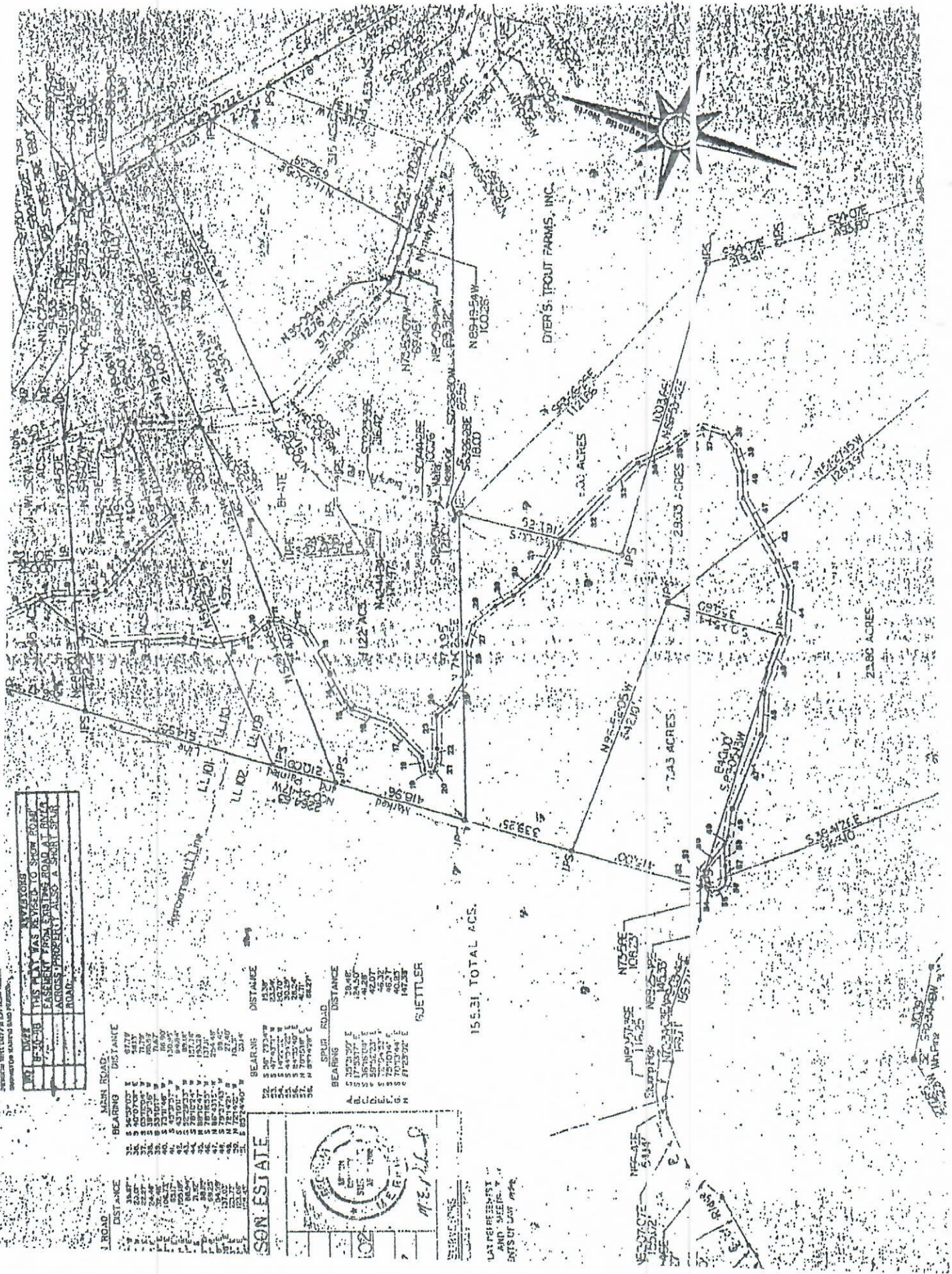
GUETTLER

BEARING		SPIN F	
12	56° 23' 30" E	5	35° 21' 30" E
13	54° 43' 15" E	6	37° 53' 17" E
14	54° 19' 25" E	7	36° 15' 23" E
15	54° 43' 20" E	8	59° 52' 23" E
16	54° 43' 40" E	9	59° 52' 23" E
17	54° 43' 40" E	10	59° 52' 23" E
18	54° 43' 40" E	11	59° 52' 23" E
19	54° 43' 40" E	12	59° 52' 23" E
20	54° 43' 40" E	13	59° 52' 23" E
21	54° 43' 40" E	14	59° 52' 23" E
22	54° 43' 40" E	15	59° 52' 23" E
23	54° 43' 40" E	16	59° 52' 23" E
24	54° 43' 40" E	17	59° 52' 23" E
25	54° 43' 40" E	18	59° 52' 23" E
26	54° 43' 40" E	19	59° 52' 23" E
27	54° 43' 40" E	20	59° 52' 23" E
28	54° 43' 40" E	21	59° 52' 23" E
29	54° 43' 40" E	22	59° 52' 23" E
30	54° 43' 40" E	23	59° 52' 23" E
31	54° 43' 40" E	24	59° 52' 23" E
32	54° 43' 40" E	25	59° 52' 23" E
33	54° 43' 40" E	26	59° 52' 23" E
34	54° 43' 40" E	27	59° 52' 23" E
35	54° 43' 40" E	28	59° 52' 23" E
36	54° 43' 40" E	29	59° 52' 23" E
37	54° 43' 40" E	30	59° 52' 23" E
38	54° 43' 40" E	31	59° 52' 23" E
39	54° 43' 40" E	32	59° 52' 23" E
40	54° 43' 40" E	33	59° 52' 23" E
41	54° 43' 40" E	34	59° 52' 23" E
42	54° 43' 40" E	35	59° 52' 23" E
43	54° 43' 40" E	36	59° 52' 23" E
44	54° 43' 40" E	37	59° 52' 23" E
45	54° 43' 40" E	38	59° 52' 23" E
46	54° 43' 40" E	39	59° 52' 23" E
47	54° 43' 40" E	40	59° 52' 23" E
48	54° 43' 40" E	41	59° 52' 23" E
49	54° 43' 40" E	42	59° 52' 23" E
50	54° 43' 40" E	43	59° 52' 23" E
51	54° 43' 40" E	44	59° 52' 23" E
52	54° 43' 40" E	45	59° 52' 23" E
53	54° 43' 40" E	46	59° 52' 23" E
54	54° 43' 40" E	47	59° 52' 23" E
55	54° 43' 40" E	48	59° 52' 23" E
56	54° 43' 40" E	49	59° 52' 23" E
57	54° 43' 40" E	50	59° 52' 23" E
58	54° 43' 40" E	51	59° 52' 23" E
59	54° 43' 40" E	52	59° 52' 23" E
60	54° 43' 40" E	53	59° 52' 23" E
61	54° 43' 40" E	54	59° 52' 23" E
62	54° 43' 40" E	55	59° 52' 23" E
63	54° 43' 40" E	56	59° 52' 23" E
64	54° 43' 40" E	57	59° 52' 23" E
65	54° 43' 40" E	58	59° 52' 23" E
66	54° 43' 40" E	59	59° 52' 23" E
67	54° 43' 40" E	60	59° 52' 23" E
68	54° 43' 40" E	61	59° 52' 23" E
69	54° 43' 40" E	62	59° 52' 23" E
70	54° 43' 40" E	63	59° 52' 23" E
71	54° 43' 40" E	64	59° 52' 23" E
72	54° 43' 40" E	65	59° 52' 23" E
73	54° 43' 40" E	66	59° 52' 23" E
74	54° 43' 40" E	67	59° 52' 23" E
75	54° 43' 40" E	68	59° 52' 23" E
76	54° 43' 40" E	69	59° 52' 23" E
77	54° 43' 40" E	70	59° 52' 23" E
78	54° 43' 40" E	71	59° 52' 23" E
79	54° 43' 40" E	72	59° 52' 23" E
80	54° 43' 40" E	73	59°

SON. ESTATE



UNCLASSIFIED
DATE 07-11-2013 BY 60322 UCBAW



CRACKING
LINE
-WAY-
DEAD DANGER

5. THE 2.5.2014 AT 10:30 AM
WE DR. ESTERES THAT THE
WE CLIMBING AND A STORM TO BE
GOD IN 2000/2011

INVESTING	7-30-88	THE T-11 WAS REQUESTED TO SHOW ROAD EASTWARD FROM EXITING ROAD AT RIVER CACTUS PROPERTY ALSO A SHORT SPUR ROAD.
-----------	---------	---

POLETTI (MAN) WAS AN APOCALYPTIC CATHOLIC WITH A STRONG BELIEF IN THE DIVINE RIGHT OF KINGS. HE WAS A FIERCE ENEMY OF THE UNITED STATES AND THE UNITED NATIONS. HE WAS A FIERCE ENEMY OF THE UNITED STATES AND THE UNITED NATIONS. HE WAS A FIERCE ENEMY OF THE UNITED STATES AND THE UNITED NATIONS.

DISTANCE		BEARING		DISTANCE		BEARING		DISTANCE	
84.97	N 33.0° E	20.2	S 79.0° W	3.817	S 85.3° E	35	S 40.7° E	87.19	
150.57	N 10.0° E	50.8	S 102.0° W	1.000	N	36	S 40.7° E	58.13	
140.62	N 10.0° E	20.8	S 42.3° E	62.87	N	37	S 40.7° E	60.19	
249.34	N 10.0° E	20.8	N 140.4° E	22.46	N	38	S 38.0° E	71.87	
183.03	N 10.0° E	20.8	N 10.0° E	106.76	N	39	S 38.0° E	71.87	
83.03	N 10.0° E	20.8	N 10.0° E	62.87	N	40	S 38.0° E	71.87	
35.84	N 10.0° E	20.8	N 72.2° E	106.76	N	41	S 38.0° E	71.87	
82.00	N 10.0° E	20.8	N 10.0° E	106.76	N	42	S 43.0° W	71.87	
82.00	N 10.0° E	20.8	N 10.0° E	106.76	N	43	S 43.0° W	71.87	
82.00	N 10.0° E	20.8	N 10.0° E	106.76	N	44	S 43.0° W	71.87	
82.00	N 10.0° E	20.8	N 10.0° E	106.76	N	45	S 43.0° W	71.87	
82.00	N 10.0° E	20.8	N 10.0° E	106.76	N	46	S 43.0° W	71.87	
82.00	N 10.0° E	20.8	N 10.0° E	106.76	N	47	S 43.0° W	71.87	
82.00	N 10.0° E	20.8	N 10.0° E	106.76	N	48	S 43.0° W	71.87	
82.00	N 10.0° E	20.8	N 10.0° E	106.76	N	49	S 43.0° W	71.87	
82.00	N 10.0° E	20.8	N 10.0° E	106.76	N	50	S 43.0° W	71.87	
82.00	N 10.0° E	20.8	N 10.0° E	106.76	N	51	S 43.0° W	71.87	
82.00	N 10.0° E	20.8	N 10.0° E	106.76	N	52	S 43.0° W	71.87	
82.00	N 10.0° E	20.8	N 10.0° E	106.76	N	53	S 43.0° W	71.87	
82.00	N 10.0° E	20.8	N 10.0° E	106.76	N	54	S 43.0° W	71.87	
82.00	N 10.0° E	20.8	N 10.0° E	106.76	N	55	S 43.0° W	71.87	
82.00	N 10.0° E	20.8	N 10.0° E	106.76	N	56	S 43.0° W	71.87	
82.00	N 10.0° E	20.8	N 10.0° E	106.76	N	57	S 43.0° W	71.87	
82.00	N 10.0° E	20.8	N 10.0° E	106.76	N	58	S 43.0° W	71.87	
82.00	N 10.0° E	20.8	N 10.0° E	106.76	N	59	S 43.0° W	71.87	
82.00	N 10.0° E	20.8	N 10.0° E	106.76	N	60	S 43.0° W	71.87	
82.00	N 10.0° E	20.8	N 10.0° E	106.76	N	61	S 43.0° W	71.87	
82.00	N 10.0° E	20.8	N 10.0° E	106.76	N	62	S 43.0° W	71.87	
82.00	N 10.0° E	20.8	N 10.0° E	106.76	N	63	S 43.0° W	71.87	
82.00	N 10.0° E	20.8	N 10.0° E	106.76	N	64	S 43.0° W	71.87	
82.00	N 10.0° E	20.8	N 10.0° E	106.76	N	65	S 43.0° W	71.87	
82.00	N 10.0° E	20.8	N 10.0° E	106.76	N	66	S 43.0° W	71.87	
82.00	N 10.0° E	20.8	N 10.0° E	106.76	N	67	S 43.0° W	71.87	
82.00	N 10.0° E	20.8	N 10.0° E	106.76	N	68	S 43.0° W	71.87	
82.00	N 10.0° E	20.8	N 10.0° E	106.76	N	69	S 43.0° W	71.87	
82.00	N 10.0° E	20.8	N 10.0° E	106.76	N	70	S 43.0° W	71.87	
82.00	N 10.0° E	20.8	N 10.0° E	106.76	N	71	S 43.0° W	71.87	
82.00	N 10.0° E	20.8	N 10.0° E	106.76	N	72	S 43.0° W	71.87	

CR: J. E. WILSON ESTATE

OF UNION
GEORGIA

110-109-110-102
1" = 200'
FRI 3, 1987



BEARING	SPIN ROAD	DISTANCE
A 2513.90" E		30.48"
B 1733.77" E		12.48"
C 1636.60" E		41.88"
D 2812.23" E		42.00"
E 7510.91" E		46.35"
F 7033.90" E		147.39"
G F12307" E		197.39"

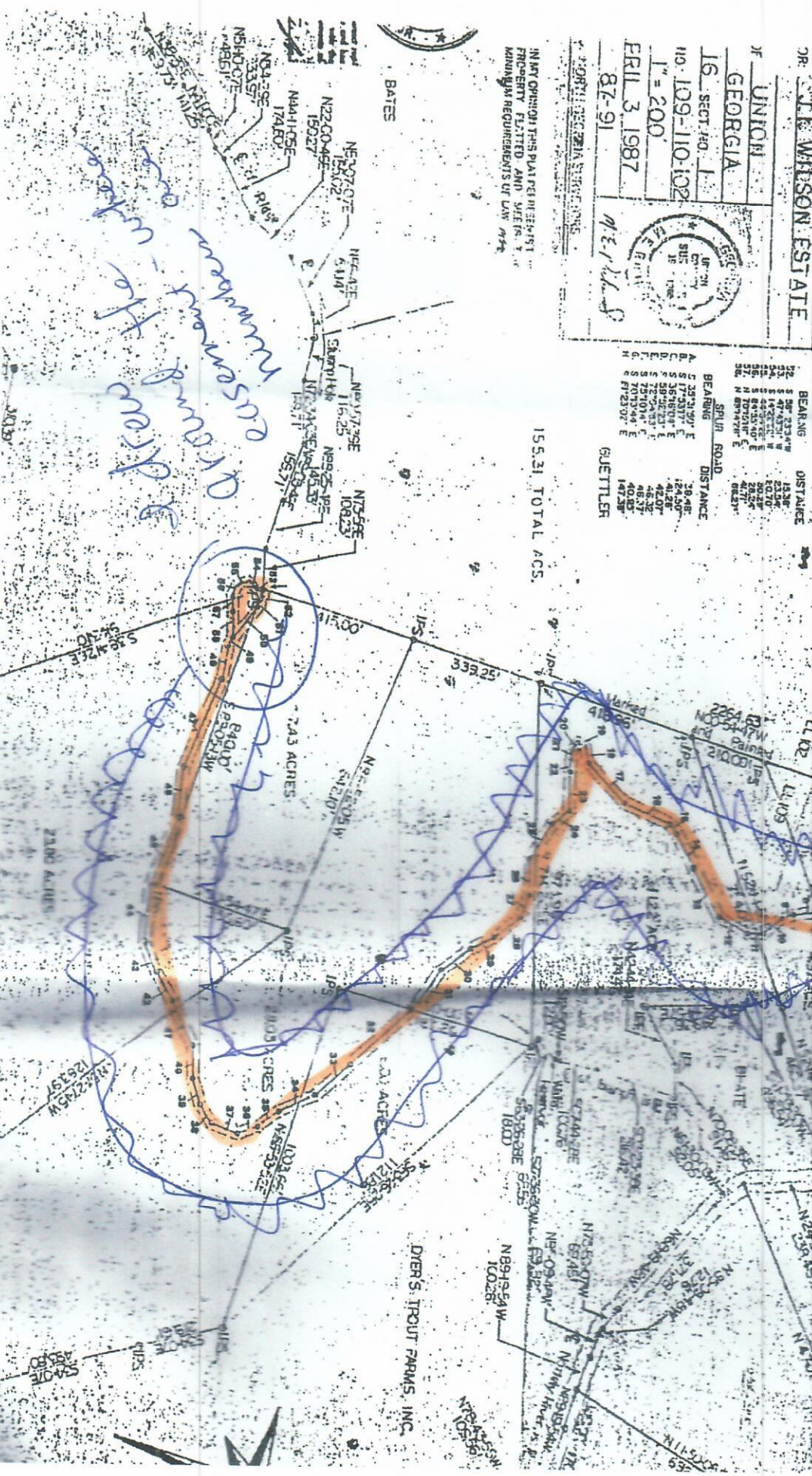
SUBJECT

155.31 TOTAL ACS.

IN MY OPINION THIS PLAN COMPLIES WITH
PROPERTY PLATTED AND MEETS THE
MINIMUM REQUIREMENTS OF LAW *msc*

STATES

Disassembly
member
cut-off



DYER'S TROUT FARMS, INC.

REG:IT
NCC-54-47W-
3200
-258.40
N00-54-47W

258.40
N 00-54-47

35 NOV 1964

564 CS.

07703

10/10/10

69-4645E1-7
B. Russell

162-7129

100

LANE S. BISHOP & ASSOCIATES, LLC

P. O. BOX 1506
4145 EAST FIRST ST.
BLUE RIDGE, GA 30513
706-632-3919

Invoice

DATE	INVOICE #
6/4/2019	203093

BILL TO	NAME ON PLAT
NANCY ADAMS 8131 EAST ANDREW JOHNSON HWY WHITESBURG, TN 37891 423-312-3314	

JOB ORDER NUMBER		TERMS	CREW CHI...	DRAFTSMAN	ORDERED BY
190510E		Due on receipt	DA	N/A	
DATE	DESCRIPTION	LL-D-S	COUNTY	AMOUNT	
5/29/2019	STAKED EASEMENT TO 23.82 ACRES	109-16-1	UNION	1,062.50	
ADDITIONAL FEES REQUIRED FOR RECORDING PLATS			Total	\$1,062.50	

SURVEY DATA:

- ALL MATTERS OF
TITLE EXCEPTED.

THIS SURVEY IS FOR THE EXCLUSIVE USE OF THE PERSON(S) HEREON NAMED AND IS NOT INTENDED FOR ANY OTHER PARTY.

-- BHA TE --
D.B.154/PG.611

--- BHATE ---
D.B.443/PG.171

S 85°56'50" E 840.53'

APPROX. LOCATION OF 50

NON EXCLUSIVE

INGRESS-EGRESS EASEMENT AS PER D.B.164/

IPF 1/2"RB
(TYPICAL)

N 04°00'56" E 355.80'

NAIL SET:

THE FIELD DATA UPON WHICH THIS MAP OR PLAT IS BASED HAS A PRECISION OF ONE FOOT IN 13.3024 FEET, AN ANGULAR ERROR OF 12"± PER ANGLE POINT AND WAS ADJUSTED USING COMPASS RULE.

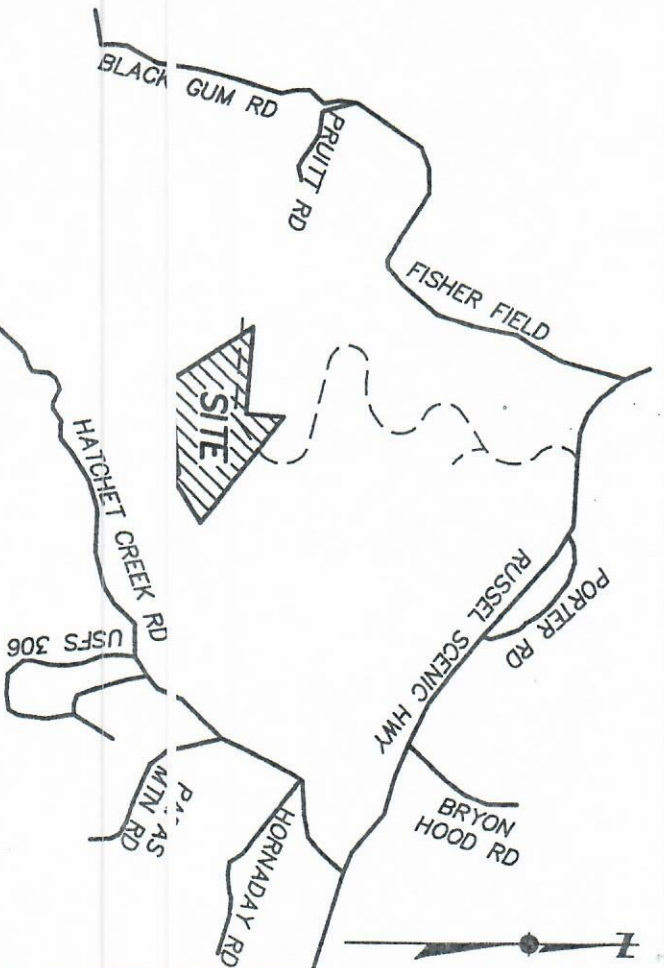
THIS MAP OR PLAT HAS BEEN CALCULATED FOR CLOSURE AND IS FOUND TO BE ACCURATE WITHIN ONE FOOT IN 326.273 FEET.

--- BARRENTINE ---
D.B.679/Pg.288

S 52°25'26" E 1283.92'

MAGNETIC NORTH

LOCATION MAP (N.T.S.)



LEGEND

- △ CALCULATED POINT
- IRON PIN SET (IPS 1/2"RB)
- IRON PIN FOUND (I.P.F.)
- ⊠ RIGHT-OF-WAY MARKER
- PROPERTY LINE
- <<<<<< RIDGE LINE
- x-x-x-x- FENCE
- - - - - DITCH
- ~~~~~ STREAM
- ~~~~~ HOLLOW
- LAND LOT LINE (LL)
- CENTERLINE
- POWERLINE
- TELEPHONE LINE
- == PAVED ROAD
- - - - - DIRT ROAD
- GRAVEL ROAD
- TELE/POWER POLE
- TELE/ELEC BOX
- FENCE POST F.P.
- DEED BOOK
- P.B. PLAT BOOK
- L.L.C. LAND LOT CORNER
- N.T.S. NOT TO SCALE



REAL ESTATE | MARCH 15TH, 2018

“Exclusive” vs. “Non-Exclusive” Easements

When a person, company or governmental entity holds an “easement” on a portion of real estate, it is a grant of a non-possessory interest in the real estate. The party who has the easement may use the easement real estate in a certain way, but the ownership of the real estate remains with the landowner.

Easements are either “exclusive” or “non-exclusive.” An “exclusive easement” limits the right to use the easement to a particular party at the exclusion of all others. No other party may use the easement.

A “non-exclusive easement” exists when one party has an easement on or over real estate, but the landowner can grant additional easements to other parties on or over the same real estate. In either case, the landowner may typically continue to use the real estate subject to

the easement or terms of the easement agreement where his or her use does not conflict with the purpose of the easement.

A party with a non-exclusive easement over a portion of real estate is more limited and cannot, for example, block access to the easement area, since that area is available for use to all parties who have an interest in that portion of the real estate. Co-easement holders must take precautions to not interfere with the rights of other users of the real estate.

Featured Projects

Legal Updates

Real Estate

YLSLG News

Related Articles

What Type of "Public Use" Can Justify Taking Real Estate in an Eminent Domain Case?

The Difference Between Taking as an "Easement" and "Fee Simple"

CONTACT OUR TEAM

CALL 317-705-0707

Newsletter Signup